

Wallace & Tiernan® Feed Systems

A-727-G Dry volumetric feeder

The A-727-G dry volumetric feeder is designed for the volumetric metering of powdered and granulated substances used in water treatment.

Design and Function

The standard model features a feed screw powered by a drive motor with a constant speed (version GS). The metering volume flow can be adjusted by starting and stopping the drive motor. A GM drive version with continuously adjustable variable-speed gear is also available, featuring a feed rate range of 1 : 6. The also available feed rate adjustment via frequency converter has a further extended range of adjustment as well.

Options

- Feed hopper in different sizes
- Outflow pipe length up to 1000 mm
- Outflow pipe with heating collar for bulk products sensitive to moisture
- Drive variations: Constant drive, variable-speed gear, frequency converter controlled
- Fluidification stirrer for bulk products with a tendency for bridging
- Speed monitoring, detects worm shaft standstill
- Drive motor for special voltage
- Special paint

Benefits:

- Multiple uses due to different drive and screw diameter variations
- Mechanical jam protection system with shearing pin
- Also well suited for abrasive and aggressive bulk products
- High level of operational safety with optional speed monitoring function



The illustration depicts the A-727-G dry volumetric feeder integrated into a dissolving system.

Product Sheet

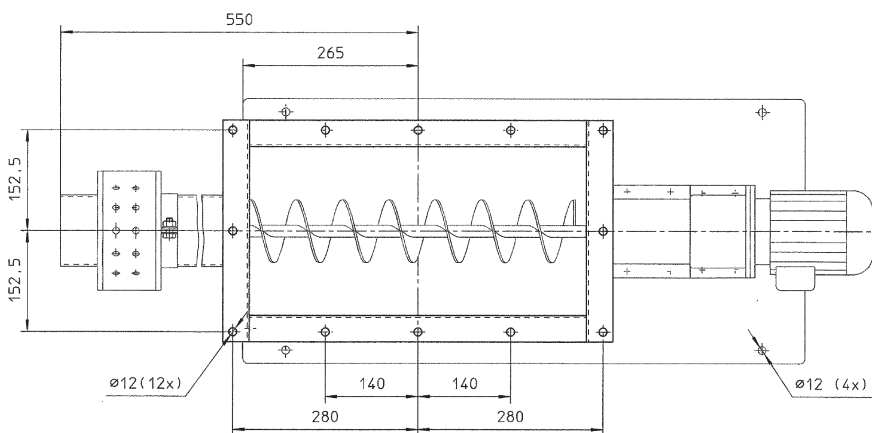
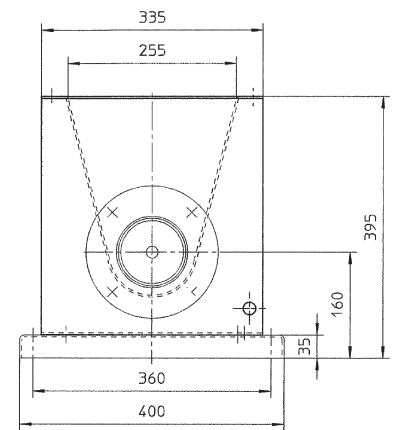
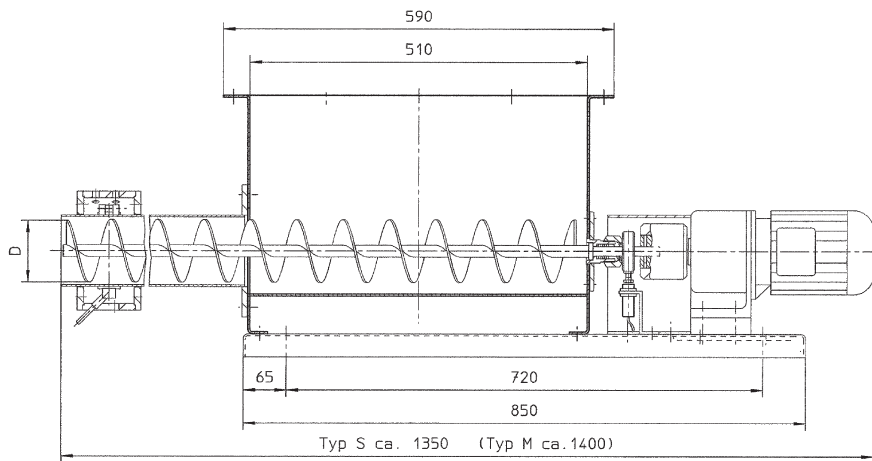
Water Technologies

SIEMENS

Technical Data

Feed screws Ø mm	Feed screw speed 1/min	Max. metering volume flow dm ³ /h	Driving power motor kW	
			GS	GM
45	40	100	0.12	0.25
	60	150	0.18	0.25
95	15	325	0.12	0.25
	30	650	0.18	0.25
	60	1300	0.18	0.55
120	55	2600	0.55	0.55
	110	5200	1.10	1.10

The metering volume flows indicated in the table are theoretical values. The actual metering volume flow rate depends on the product. Especially with calcium hydrate, the actual metering volume flow might only amount to 70 % of the indicated theoretical value. The max. permissible grain size is 4 mm.



Metering housing volume:
26 dm³

Material:
Stainless steel (1.4571)

Outflow pipe length:
290 mm

Power supply:
230/400 V, 50 Hz

Protection category:
IP 65

Painting:
RAL 7035, light gray

Siemens
Water Technologies

Wallace & Tiernan GmbH
Auf der Weide 10
89312 Günzburg
Germany
Email: wtger.water@siemens.com

© 2008 Siemens Water Technologies Corp.
WT.320.150.000.DE.PS.1008
Subject to change without prior notice.

Wallace & Tiernan is a trademark of Siemens, its subsidiaries or affiliates.

The information provided in this brochure contains merely general descriptions of characteristics of performance which in case of actual use do not always apply as described or which may change as a result of further development of the products. An obligation to provide the respective characteristics shall only exist if expressly agreed in the terms of contract.